

EVIDEN

**ElevateNow for SAP**  
**the time is now**

# The time to start your migration journey to S/4HANA is now

ERP landscapes frequently resemble bustling ever-changing cities. They involve lots of manual effort spread across multiple systems leading towards a user-experience that is suboptimal at best. Let's face it, this is an **experience geared towards power users**, not casual ones

Modernising or refreshing the ERP system can be like giving your business a refreshing makeover. Think of it as decluttering your workspace for a productivity boost. However, it needs to be meticulously planned to minimise risk to the business and ensure that whatever solution arrived at is optimal for the business

One way of solving the challenges is with **custom add-ons and solutions**, but this can be somewhat like juggling on a unicycle - it might seem like a good idea at the time, and is sure to get peoples attention, but can often be difficult to manage and just slows you down. These extras cling to your ERP system like barnacles to a boat and can mean fixing anything means dealing with each customisation in turn. Even applying security patches and vendor updates can become a puzzle worthy of the finest grandmasters

**This leads to technical-debt** – the sorry aftermath of quick fixes and shortcuts, like a pile of dishes you avoid until the sink is piled high and it just becomes overwhelming. It all bogs down your IT team and hampers business agility





What if there was a better way?

## We believe there is, and we call it ElevateNow.

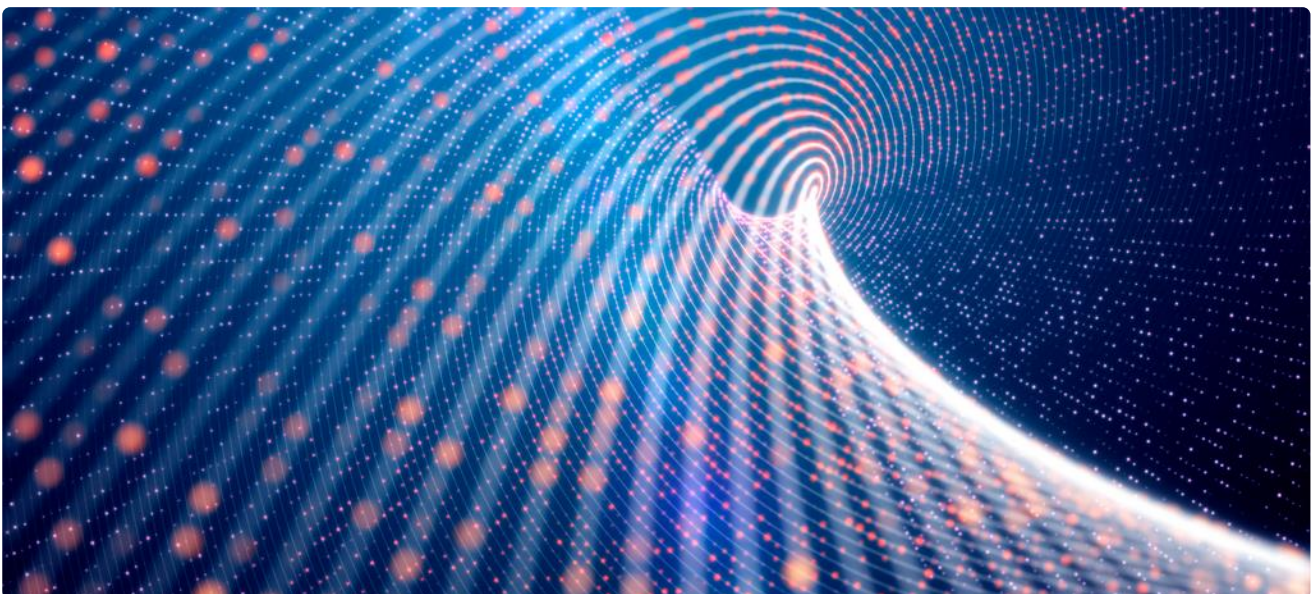
By blending the power of the **ServiceNow platform** with your **traditional ERP system**, we believe that this combination offers a superior user experience whilst allowing you to **innovate faster, eliminate process bottlenecks** and **automate those pesky manual tasks**.

We start by using ServiceNow's ERP Mining tools to analyse your ERP system, unearthing those custom applications and data model variations that can be lifted out of the ERP system into ServiceNow. The core data remains within the ERP as system of record, but live access via ServiceNow as the system of engagement means that you can connect all those disparate processes across your business and offer a single pane of glass onto your data to provide new insights and allowing you to hit targets more quickly and easily

In addition, the ServiceNow toolbox provides **discovery, automation, and low-code development tools** along with purpose-built applications and workflows spanning the entirety of the enterprise, giving you a springboard to hit the road running

By keeping the ERP core clean and manageable, you reduce the time spent having to manage customisations and second-guessing yourself whenever it comes time to update or upgrade saving you both time and money

Eviden have partnered with ServiceNow on the ElevateNow initiative. We are both on a mission to create an ERP set up like a well-tuned engine – a system that's easy to handle, upgrade and tailor to your needs. Picture a smooth ride on a newly paved road, bridging the gaps between systems using ServiceNow's **unified approach of one data model, one security model** for your user engagement layer.



# EVIDEN

## About Eviden<sup>1</sup>

Eviden is a next-gen technology leader in data-driven, trusted and sustainable digital transformation with a strong portfolio of patented technologies. With worldwide leading positions in advanced computing, security, AI, cloud and digital platforms, it provides deep expertise for all industries in more than 53 countries. Bringing together 57,000 world-class talents, Eviden expands the possibilities of data and technology across the digital continuum, now and for generations to come. Eviden is an Atos Group company with an annual revenue of c. € 5 billion.

<sup>1</sup> Eviden business is operated through the following brands: Alia Consulting, AppCentrica, ATHEA, Atos Syntel, Bull, Cloudamize, Cloudreach, Cryptovision, DataSantics, digital.security, Eagle Creek, EcoAct, Edifixio, Energy4U, Engage ESM, Forensik, IDEAL GRP, IDnomic, In Fidem, Ipsotek, Maven Wave, Miner & Kasch, Motiv, Nimbix, Processia, Profit4SF, science+computing, SEC Consult, Visual BI, Worldgrid, X-Perion, zData

Connect with us



**eviden.com**

Eviden is a registered trademark © Copyright 2023, Eviden SAS – All rights reserved.